

Our History



Official opening of Harlech Leisure Centre.



New State of the Art Climbing Wall



Wall Designers Testing routes for first time.

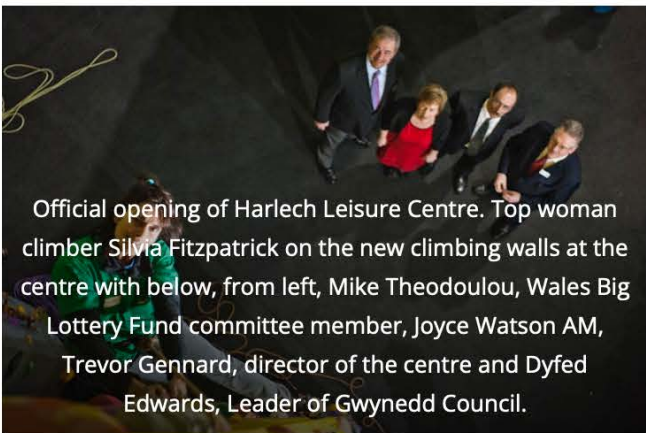
HARLECH & ARDUDWY
HAMDDEN | LEISURE

RUN BY THE COMMUNITY FOR THE COMMUNITY
#SaveOurPools

RHEOLI GAN YR GYMUNED I'R GYMUNED
#AchubEinPyllau



New Entrance



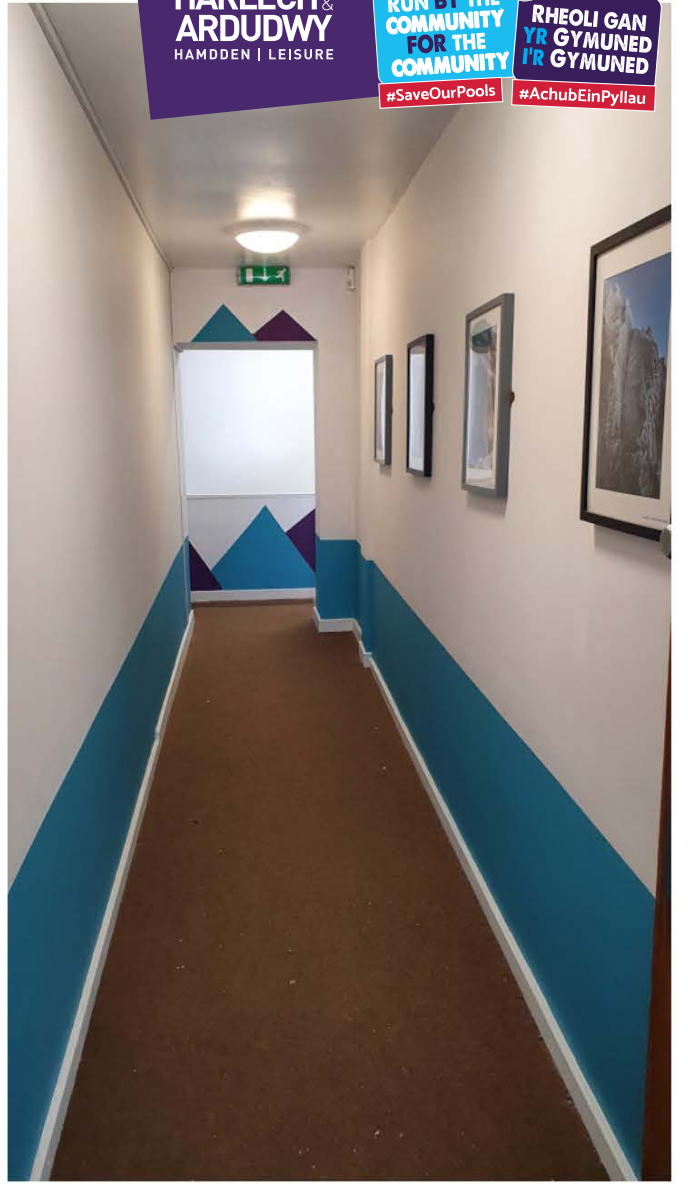
Official opening of Harlech Leisure Centre. Top woman climber Silvia Fitzpatrick on the new climbing walls at the centre with below, from left, Mike Theodoulou, Wales Big Lottery Fund committee member, Joyce Watson AM, Trevor Gennard, director of the centre and Dyfed Edwards, Leader of Gwynedd Council.



Official opening of Harlech Leisure Centre. Dyfed Edwards, Leader of Gwynedd Council,



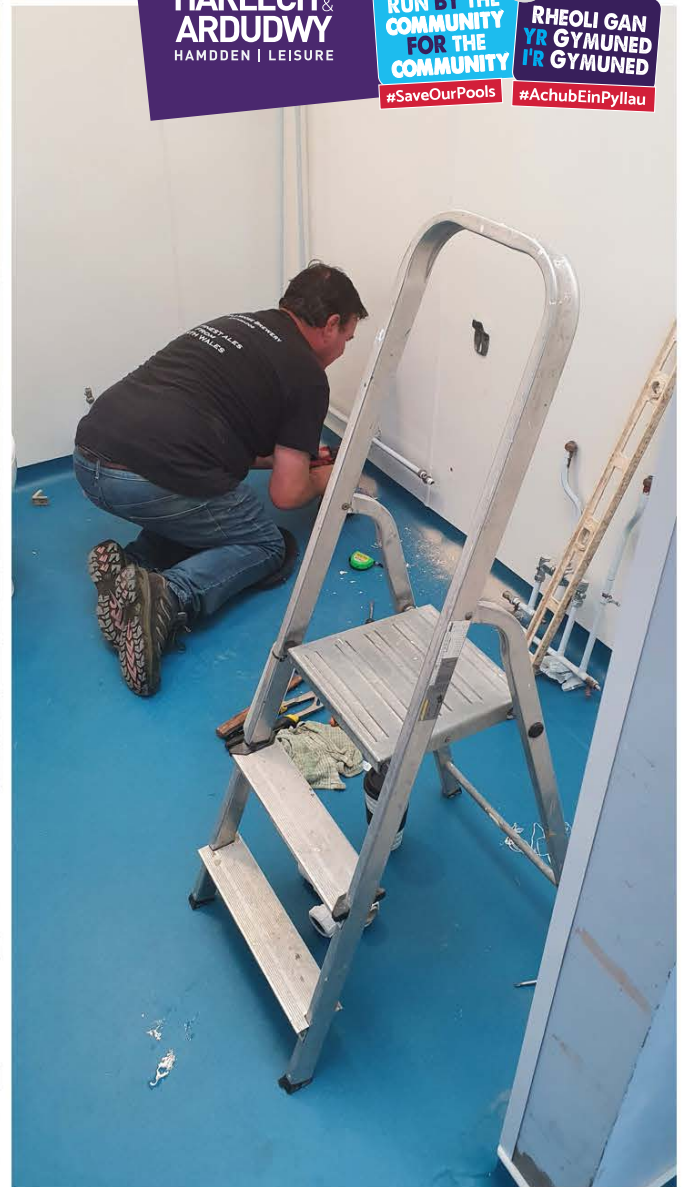
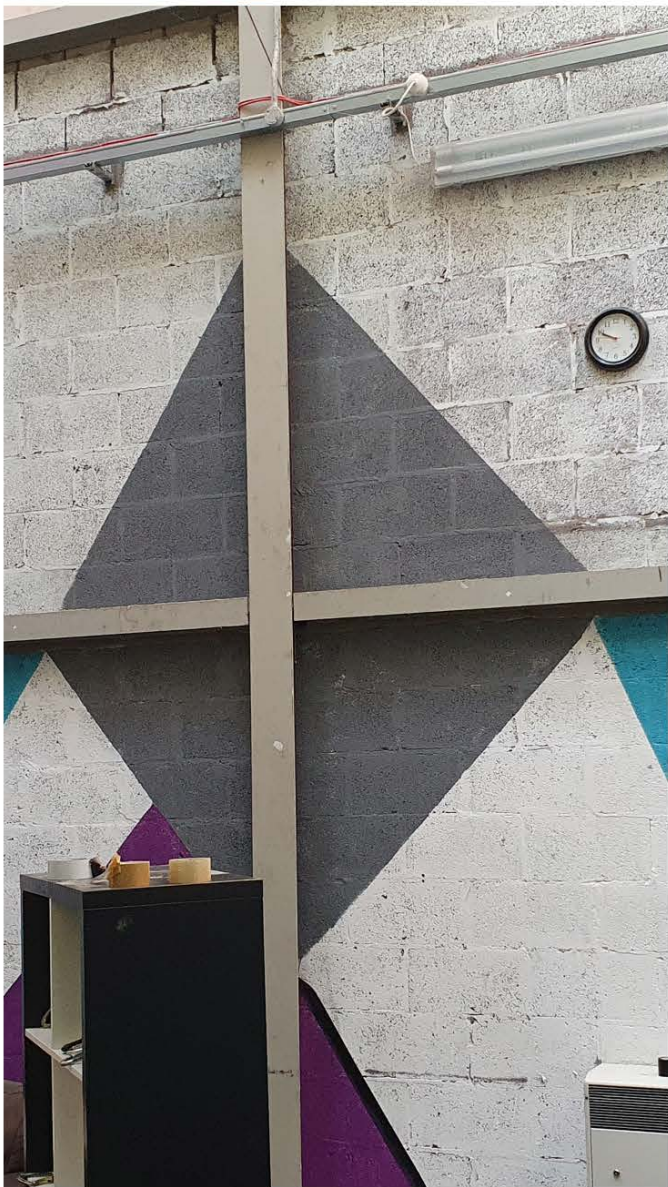




HARLECH & ARDUDWY
HAMDDEN | LEISURE

RUN BY THE COMMUNITY FOR THE COMMUNITY
#SaveOurPools

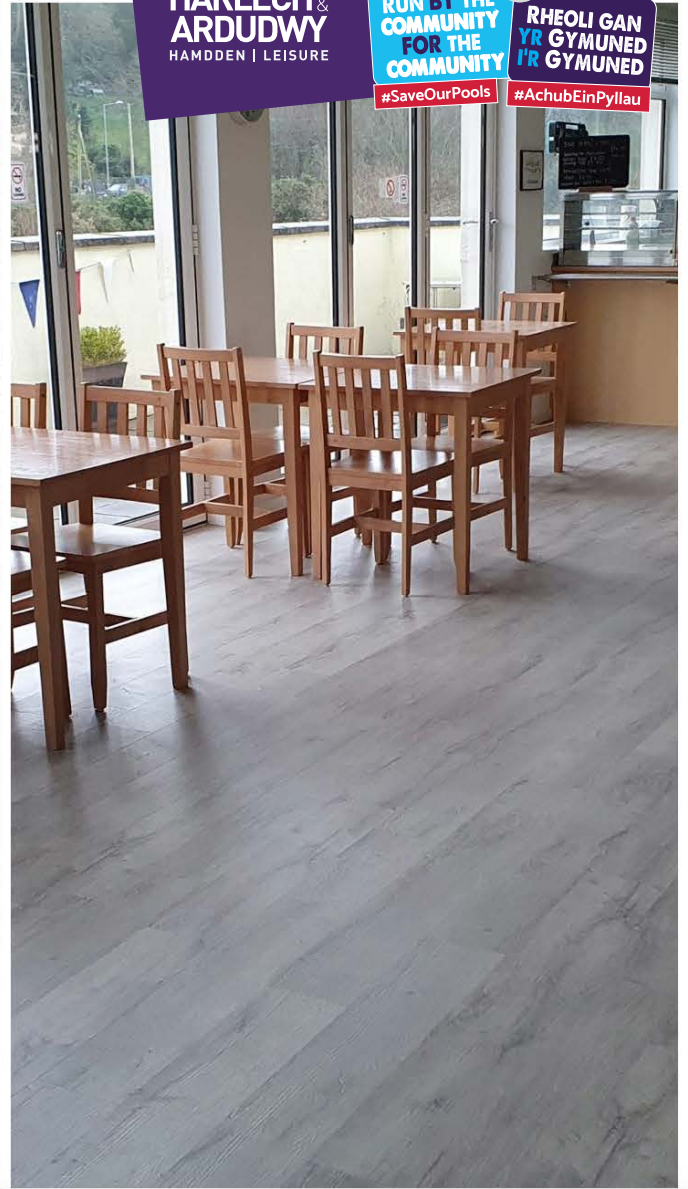
RHEOLI GAN YR GYMUNED I'R GYMUNED
#AchubEinPyllau



HARLECH & ARDUDWY
HAMDDEN | LEISURE

RUN BY THE COMMUNITY FOR THE COMMUNITY
#SaveOurPools

RHEOLI GAN YR GYMUNED I'R GYMUNED
#AchubEinPyllau



HARLECH & ARDUDWY
HAMDDEN | LEISURE

RUN BY THE COMMUNITY FOR THE COMMUNITY
#SaveOurPools

RHEOLI GAN YR GYMUNED I'R GYMUNED
#AchubEinPyllau

